

The Diamond in the Rough:

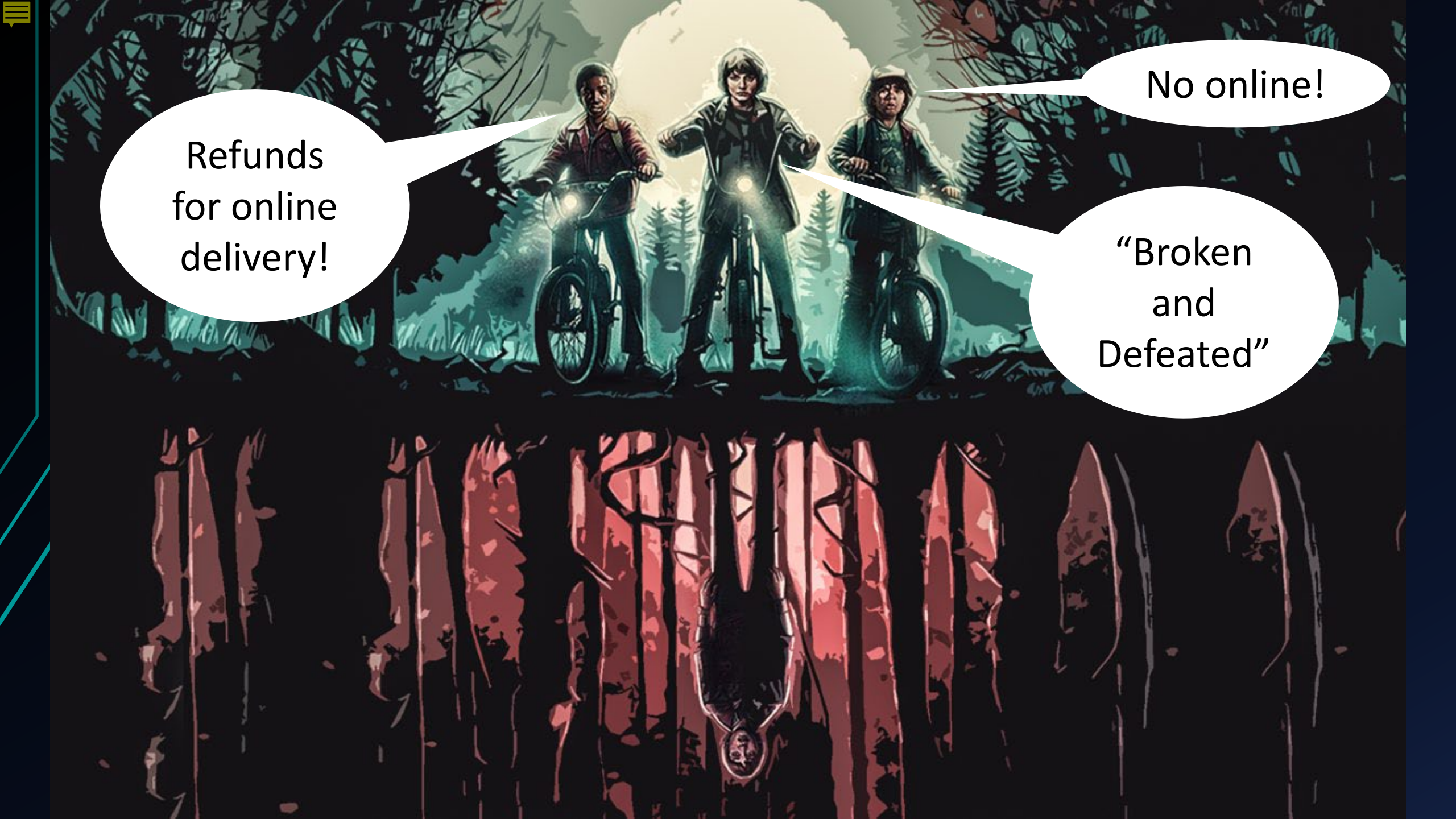
POST-COVID LEGAL EDUCATION, TECHNOLOGY
AND STUDENT EXPERIENCE.

DR SIMON SNEDDON
DEPUTY HEAD OF LAW
ASSOCIATE PROFESSOR, LEARNING & TEACHING
UNIVERSITY OF NORTHAMPTON

SLS ANNUAL CONFERENCE, 28TH JUNE 2023

Running Order

- COVID , the return, and the Upside Down
- The BATTEL model – outline
- Siren Song of Technology companies
- The Techno Elephant in the Room
- Worked Example
- There is no reverse gear



Refunds
for online
delivery!

No online!

“Broken
and
Defeated”

“Where have
all the
students
gone?”

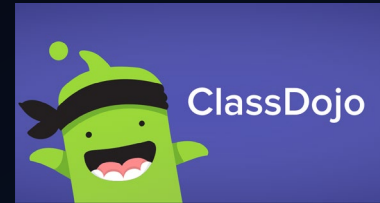
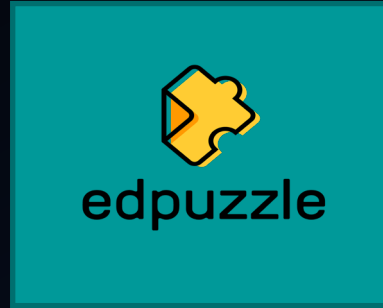
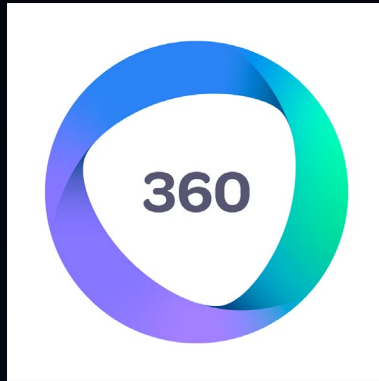




You need to
buy our thing



Here comes the shiny!



BAT-TEL

Best

Most effective in achieving a high general level of student enhancement

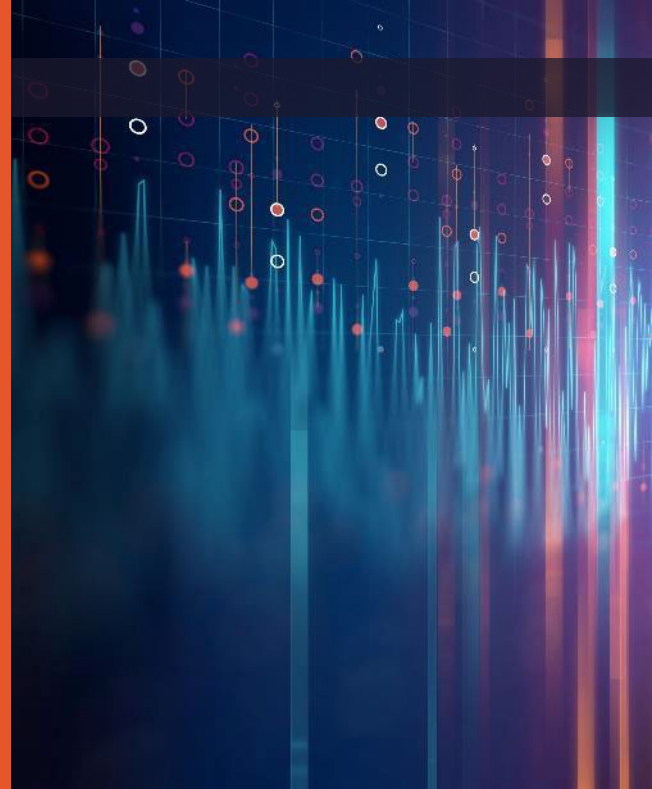
Appropriate

Developed on a scale allowing implementation in the relevant sector, under technically viable conditions, as long they are reasonably accessible to the operator

Technique

The technology used and the way in which the teaching space is designed, built, and operated

#BAT



Worked example

Application of the BAT-TEL model /
approach on 2 recently published articles

Two papers chosen.

- Wood, A., Utilizing Technology-enhanced Learning in Geography: Testing Student Response Systems in Large Lectures, Journal Of Geography In Higher Education, 2020, 44(1) 160-170
 - Audience responses systems (Mentimeter) to improve student engagement in large lectures (p160)
 - Some evidence that it did but “it should be in some way part of teaching across a program” (p167) to students get used to it.

Two papers chosen.

- Jopp, R., (2020) A Case Study of a Technology Enhanced Learning Initiative that Supports Authentic Assessment, Teaching In Higher Education 25:8, 942-958
 - Introduced a digital walking tour assessment to increase engagement, creativity and reduce plagiarism (p942)
 - Can have a positive impact on pedagogical practice (p954) but potential institutional barriers to implementation (p954).

Do they fit the model?

	BEST	APPROPRIATE	TECHNIQUE
WOOD	Partly effective but needed more integration	Easily accessible, free to use	Better staff training needed to make sure it is not used just to “fill time” (p167)
JOPP	Partly effective but needed more integration	Lots of assistance from Tourism Melbourne, but versions may be easy to replicate	Issues of technological capability and expertise [...] the potential to create uncertainty and confusion (p952)

The Techno Elephant in the Room



Apply the BATTEL model to Chat GPT - BEST

What Chat GPT says	What Google Bard says
Language model, can engage interactively with users	Has access to a vast amount of information
Can answer questions, explain concepts, provide educational examples	Can generate text, translate languages, write different kinds of creative content, and answer questions
Personalised and on-demand, so can enhance student experience	Can be used to provide access to information, help learning concepts
Provides a platform for students to engage	Allows students to practice their writing skills
Can help students explore different concepts	

Apply the BATTEL model to Chat GPT - APPROPRIATE

What Chat GPT says	What Google Bard says
Can be implemented through various platforms (e.g. virtual classrooms, or educational websites).	A very scalable and accessible tool for learning and teaching.
Easily accessed by anyone with an internet connection and a compatible device.	Cloud-based, can be accessed from anywhere with an internet connection
Technology required is readily available and technically viable	Constantly updated with new information and features, so always up-to-date and relevant
Can handle multiple users simultaneously	

Apply the BATTEL model to Bard - BEST

What Chat GPT says	What Google Bard says
Bard can provide educational explanations, assist with problem-solving, and engage in interactive conversations.	Has access to a vast amount of information, and can generate text, translate languages.
Ability to generate contextually relevant responses and provide information on a wide range of topics can contribute to student enhancement.	Can be used to provide students with access to information, help them to learn new concepts, and to practice their writing skills
Its advanced language processing capabilities may offer valuable learning opportunities.	

Apply the BATTEL model to Bard - APPROPRIATE

What Chat GPT says	What Google Bard says
Can be implemented on a large scale.	Cloud-based, so can be accessed from anywhere with an internet connection..
Cloud-based, so can be accessed by users through web-based platforms or integrated into educational applications.	Very scalable and accessible tool for learning and teaching.
Feasible to deploy Bard AI across various educational settings, allowing for widespread implementation under technically viable conditions.	Constantly being updated with new information and features, which means that it is always up-to-date and relevant

Apply the BATTEL model to Chat GPT & Bard

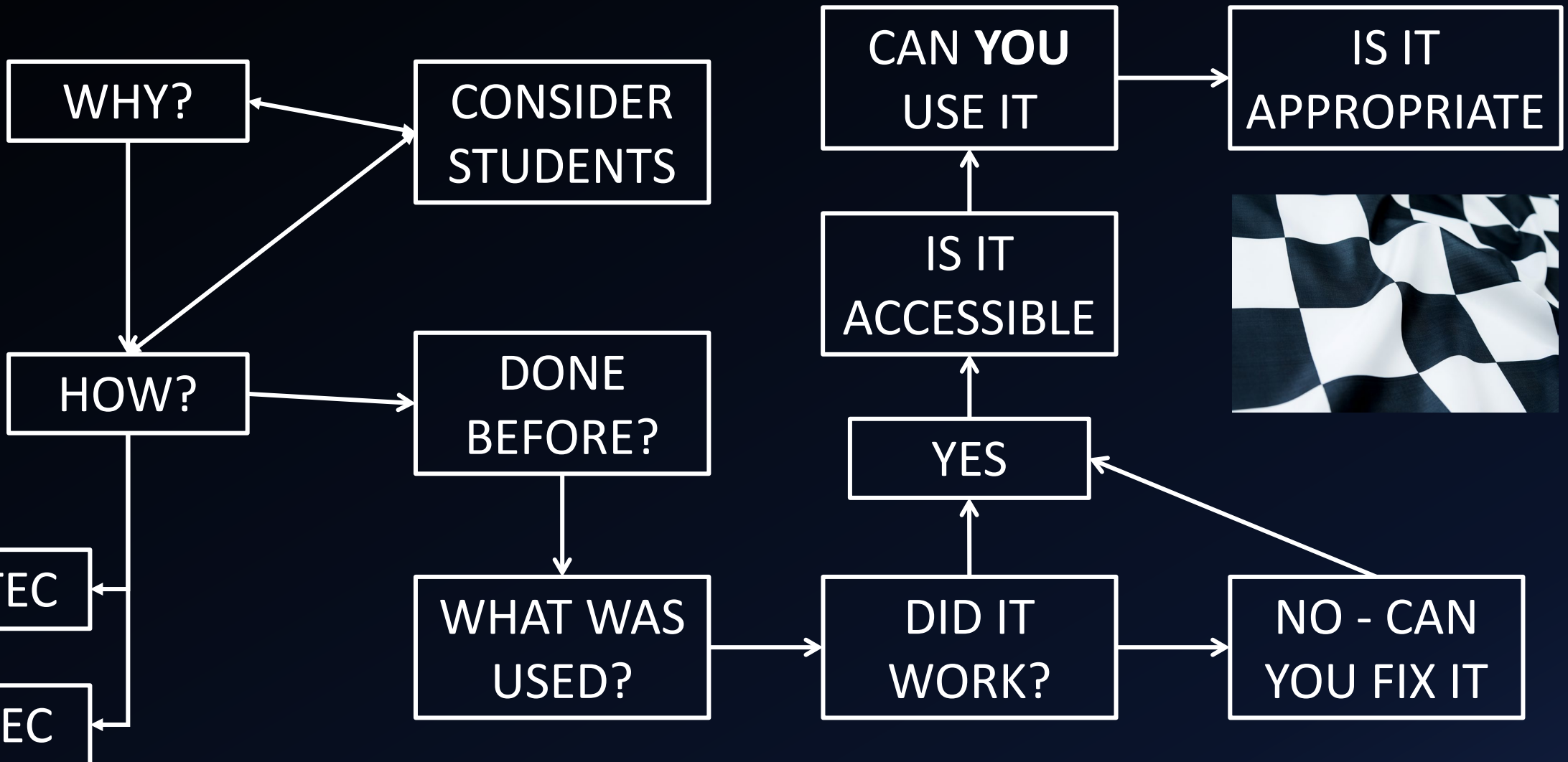
- Chat GPT can be considered as a potentially suitable technology for learning and teaching based on the BATTEL model. Its ability to enhance student learning through interactive conversations and the feasibility of its implementation in the education sector make it a valuable tool (both – Chat GPT)
- Should not replace human interaction (both – Chat GPT)
- A very promising technology that has the potential to significantly enhance learning and teaching (both – Bard)

Student Experience

- Good use of lo-tech is preferred to poor use of hi-tech
- Get the students involved in choosing the technology – try not to use too many different technologies, without a sound pedagogic reason
- Last semester I gave my students a choice of Googledoc, Padlet, Sharepoint and flipchart/postit notes to share their ideas about definitions for “the environment”
- They chose...

How to draw your BATTEL plan...

What do you want to do?



THANK YOU FOR LISTENING!

THE DIAMOND IN THE ROUGH: POST-COVID LEGAL
EDUCATION, TECHNOLOGY AND STUDENT
EXPERIENCE.

DR SIMON SNEDDON

@SIMONSNEDDON

SLS ANNUAL CONFERENCE, 28TH JUNE 2023