



Association for Learning Development in Higher Education

Welcome to LD@3: Interactive collaboration via Google Drawings
Sheryl Mansfield, University of Northampton

Microphone:

Please mute your microphone on joining and during the presentation to help minimise background noise for the presenter and other participants.

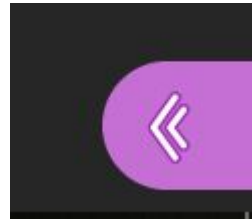
We welcome questions after the presentation so please switch mics back on and join in for questions & discussion.

Key features of the virtual classroom

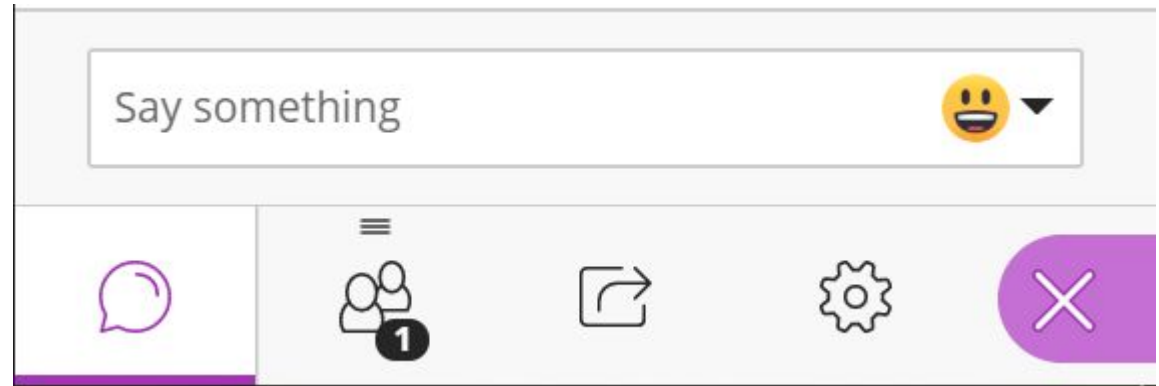
- Your controls



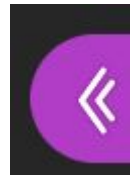
- Extra features



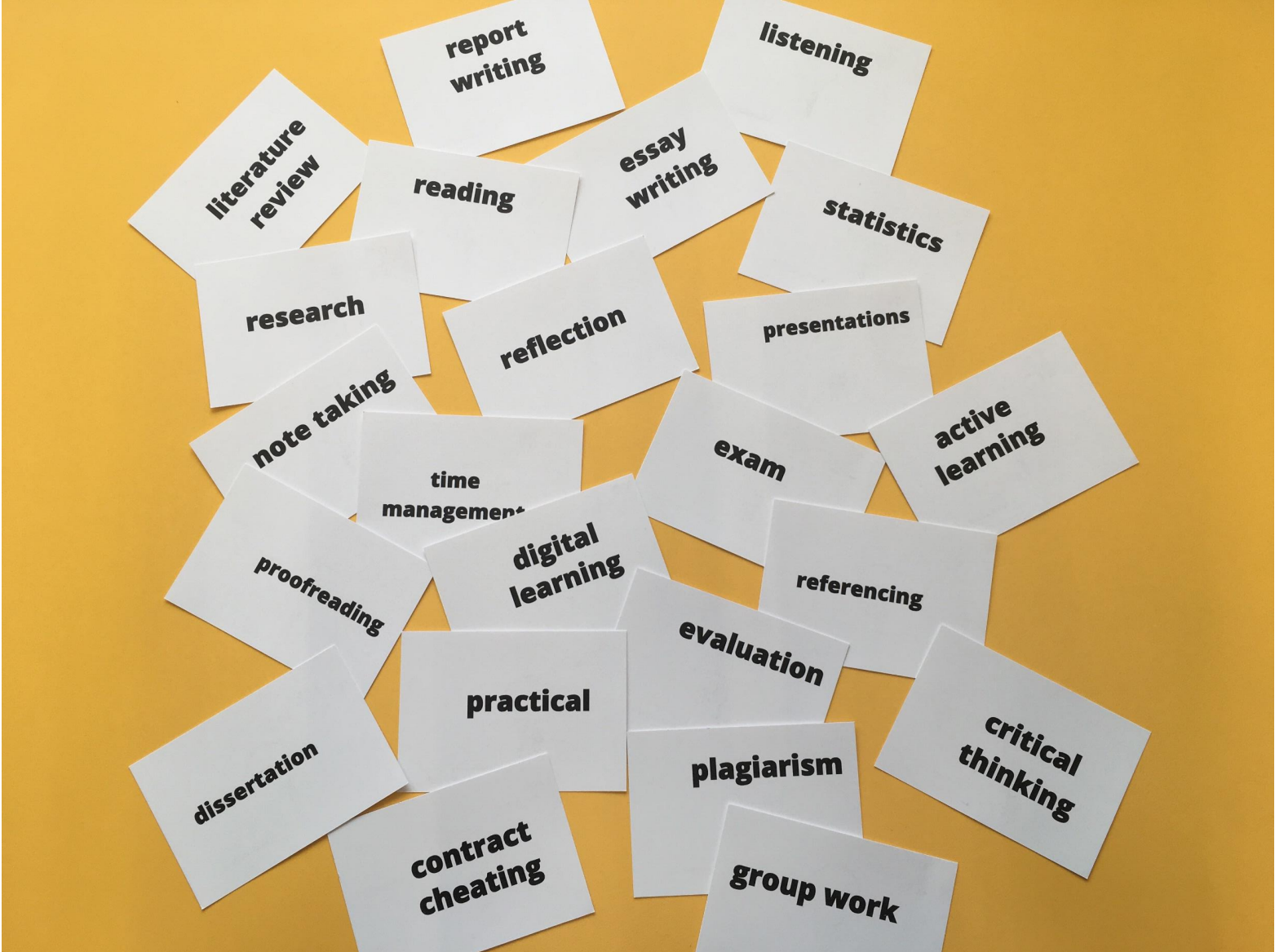
- Chat and audio settings



Where are you?



Type in the Chat



report writing

listening

literature review

reading

essay writing

statistics

research

reflection

presentations

note taking

exam

active learning

time management

digital learning

proofreading

referencing

practical

evaluation

dissertation

plagiarism

critical thinking

contract cheating

group work

Session

Describe, Analyse and Evaluate
Take it in turns to discuss each statement and place it under the relevant heading

Describe	Analyse	Evaluate
1. Signs and symptoms of the condition.	5. State the prevalence of the condition.	9. How can the other professionals help?
2. Explain the prevalence of the condition, is it reliable?	6. Discuss the theory and it's strengths and weaknesses.	10. What can be offered as a treatment for the condition?
3. What is the impact of condition on the individual?	7. What will the impact of the other professionals' help be?	11. List other professionals who can help.
4. Define a theory.	8. What causes the condition and why?	12. Discuss the significance of the theory in relation to the service user.



15 minutes



Discuss in groups where you think the relevant boxes go and reorder the google.doc

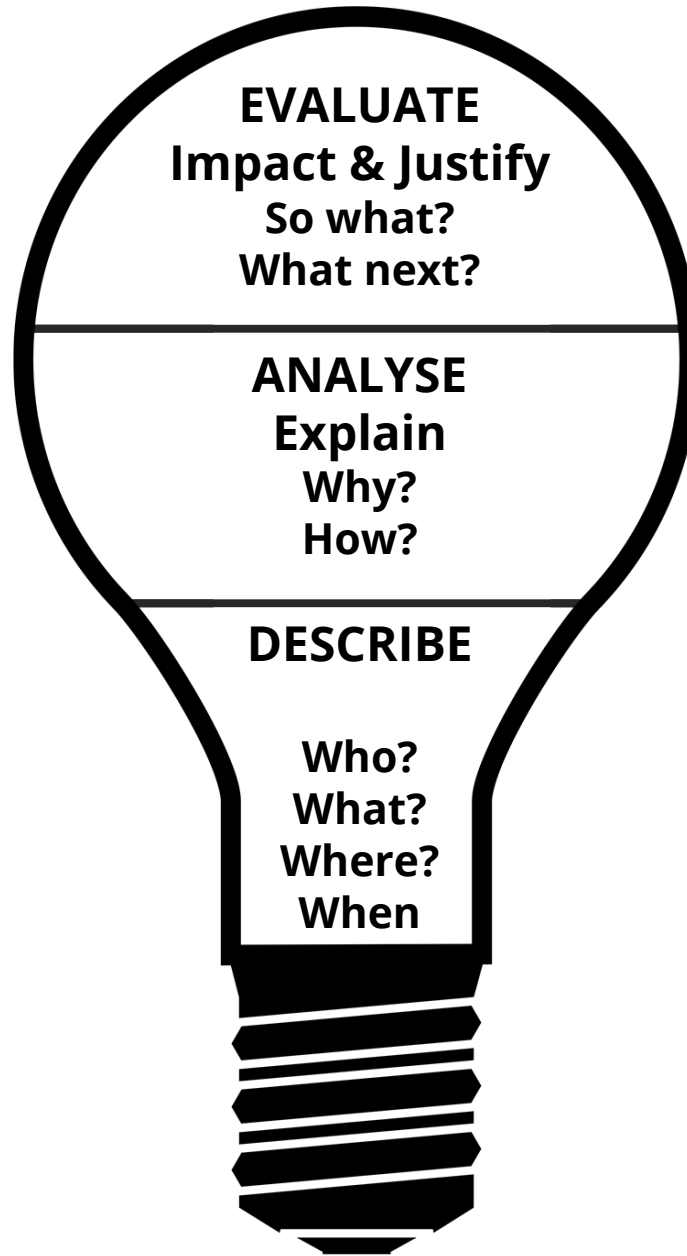


Individually write on the Padlet: What is good and not so good about the method?



Other ideas. Could you use it in your teaching?

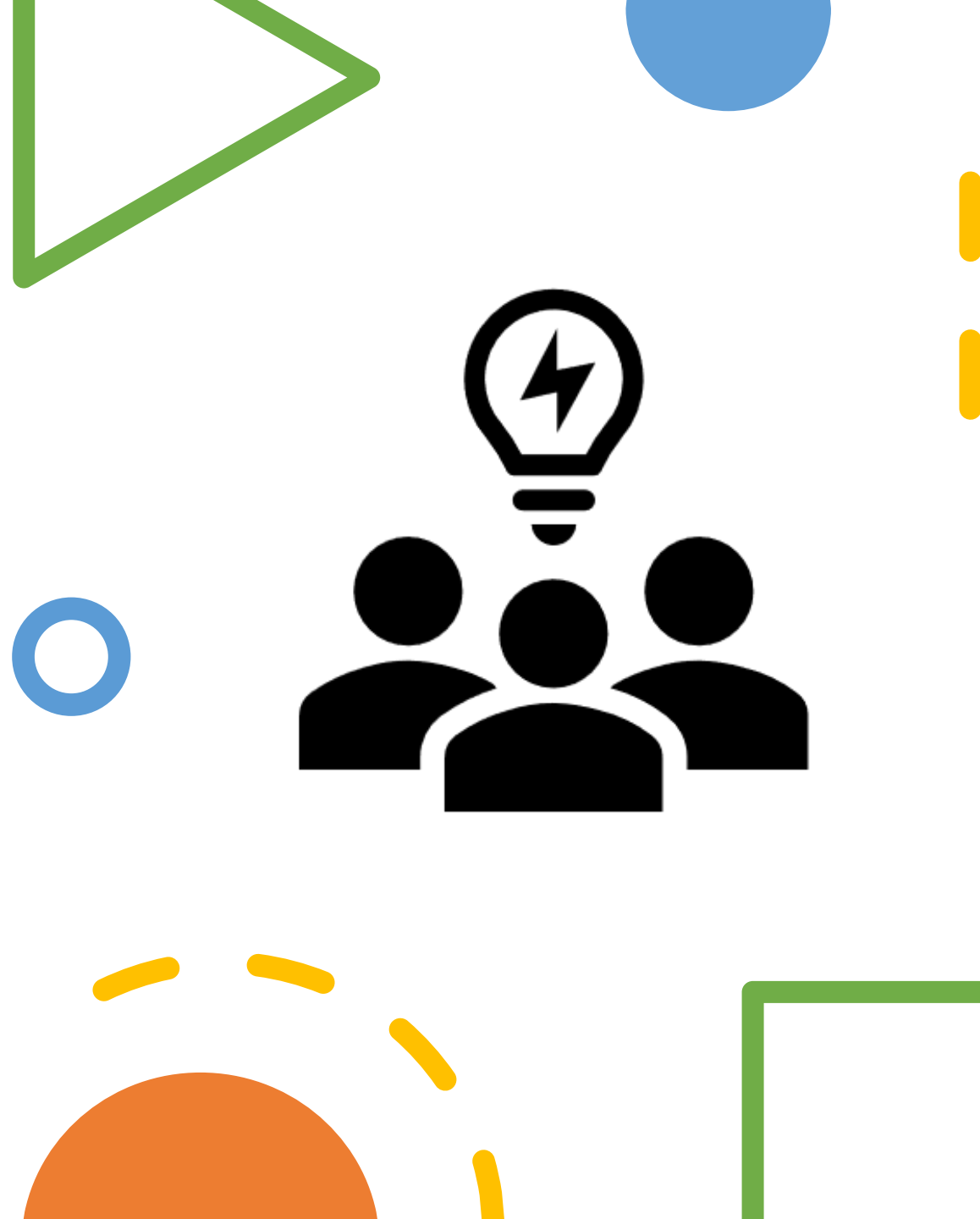
Engage student mode....



Group task

Discuss where to place the statements 1 -10.

Remember the google.doc is interactive so take it in turns to move the statements to the relevant boxes.



Describe	Analyse	Evaluate
<p data-bbox="78 218 823 425">1. Signs and symptoms of the condition.</p> <p data-bbox="78 461 823 568">4. Define a theory.</p> <p data-bbox="78 604 823 718">5. State the prevalence of the condition.</p> <p data-bbox="78 753 823 918">10. What can be offered as a treatment for the condition?</p> <p data-bbox="78 953 823 1075">11. List other professionals who can help.</p>	<p data-bbox="894 218 1600 425">2. Explain the prevalence of the condition, is it reliable?</p> <p data-bbox="894 475 1600 682">6. Discuss the theory and it's strengths and weaknesses.</p> <p data-bbox="894 725 1600 839">8. What causes the condition and why?</p> <p data-bbox="894 875 1600 996">9. How can the other professionals help?</p>	<p data-bbox="1709 218 2440 425">3. What is the impact of condition on the individual?</p> <p data-bbox="1709 475 2440 682">7. What will the impact of the other professionals' help be?</p> <p data-bbox="1709 725 2440 932">12. Discuss the significance of the theory in relation to the service user.</p>



Sheryl Mansfield

sheryl.mansfield@northampton.ac.uk

*Hope you enjoyed the session.
Thank you for all your interaction.
Please keep using the Padlet and add
your ideas.*

NU
N

